

HSEQ Management System

Community Feedback Report

First Quarter 2024

Version 01



Document Control:

Document control shall be in accordance with the HPA Document Control and Records Management Policy (HSEQ9.1) and the Document Control & Information Management Procedure (HSEQ9.1.1), ensuring that:

- An up to date version of this HSEQ Management System document is maintained;
- Records of superseded versions of the document are retained for a minimum of 7 years; and
- Current version of the document is readily available to all Managers, Employees and Key Stakeholders.

| Register of Amendments | | | | | |
|------------------------|---------|------------|---------------------------|--------------------|-------------|
| Ver No | Page no | Date | Description of amendments | Prepared by | Approved by |
| 1 | All | 03-07-2024 | Original Issue | Jennifer Stevenson | Lucy Mercer |
| | | | | | |
| | | | | | |
| | | | | | |

A person using Hutchison Ports Australia documents or data accepts the risk of:

- Using the documents or data in electronic form without requesting and checking them for accuracy against the original hard copy version; and
- Using the documents or data for any purpose not agreed to in writing by Hutchison Ports Australia

This document is Copyright, other than for the purposes of and subject to the provisions of the Copyright Act, no part of it may be reproduced in any form or by any process without the prior permission of Hutchison Ports Australia

The information contained in this manual is Confidential and is not to be used or disclosed to any person without the prior approval of Hutchison Ports Australia

| | |
|---|----------|
| Community Feedback Report – Q1, 2024 | 4 |
| 1 Introduction and Purpose | 4 |
| 2 Community Feedback Snapshot..... | 4 |
| 3 Distribution of this Report | 5 |
| 4 Progress of Operational Development..... | 5 |
| 4.1.1 Milestones Achieved to Date | 5 |
| 5 Commentary on Complaints Received During this Reporting Period..... | 6 |
| 6 Commentary on Community Feedback received during this reporting period | 7 |
| 7 Trend Analysis | 7 |
| 8 How the Community can Contact Us | 7 |
| 9 Copy of Complaints Register (with personal details redacted)..... | 8 |

Community Feedback Report – Q1, 2024

1 Introduction and Purpose

This Community Feedback Report has been created as a means by which Sydney International Container Terminals (SICTL) can comply with the relevant conditions outlined in the Instrument of Development Consent DA-494-11-2003-I primarily Schedule C – Terminal Operations (referred to herein as the Development Consent). This report is an example of the commitment of Hutchison Ports Australia and Sydney International Container Terminals Pty Limited to comply with the Development Consent and manage community feedback in a manner that achieves good operational and community outcomes.

2 Community Feedback Snapshot

Table 1: Community feedback key parameters.

| Key Parameter | Data |
|--|------------------------------------|
| This reporting period | 1 January 2024 to 31 March 2024 |
| Total number of days in this reporting period | 90 |
| Total number of positive feedback events logged in this reporting period | 0 |
| Total number of negative feedback events logged in this reporting period | 0 |
| Number of negative feedback events attributed to SICTL operations only | Nil (0%) |
| Number of negative feedback events involving SICTL and another Port Botany lessee | Nil (0%) |
| Number of negative feedback events involving vessels | Nil (0%) |
| Total number of negative feedback events from this reporting period closed out | Nil (0%) |
| Total number of negative feedback events from this reporting period escalated | Nil (0%) |
| Total number of negative feedback events from this reporting period unresolved | Nil (0%) |
| Total number of negative feedback events carried over from a previous reporting period | Nil (0%) |

3 Distribution of this Report

In accordance with Consent Condition C3.1 and Section 3.5.1 of the HSEQ5.7 Operational Environmental Management Plan (OEMP) – SICTL, this report shall be provided to the following stakeholders:

- NSW Department of Planning, Industry and Environment (DPIE)
- NSW Ports
- NSW Environment Protection Authority (EPA)

and, be made publicly available on the Hutchison Ports Australia's corporate website:

<http://www.hutchisonports.com.au/Sydney-Monitoring-Reporting>

4 Progress of Operational Development

The SICTL terminal commenced operations on 1 November 2013 and serviced its first ship on 6 November 2013. Overall the terminal will become progressively operational over a series of phases outlined below.

- Phase 1 – November 2013 to March 2014;
- Phase 2 – fourth quarter 2014;

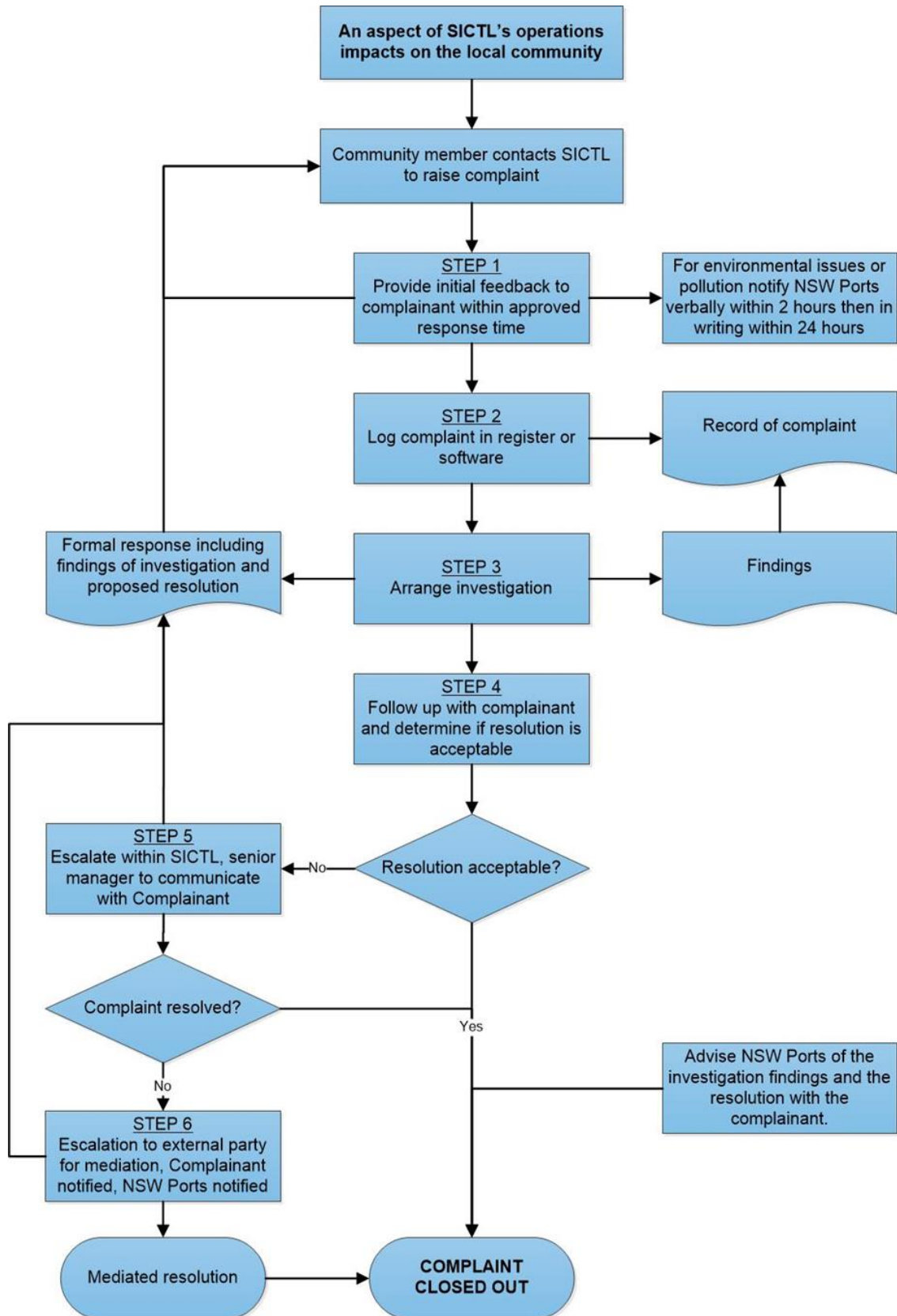
The commencement of future Phases is volume-driven and will be adjusted to meet operational demands.

4.1.1 Milestones Achieved to Date

- Construction of the terminal office building was completed and handed over;
- Construction of the maintenance workshop building was completed and handed over;
- the first Automated Stacking Crane (ASC) blocks are commissioned and are operational;
- Construction of the rail sidings was completed and handed over;
- Rail operations commenced mid-2014;
- Construction and commissioning of three additional ASC blocks has been completed in mid-2015.

5 Commentary on Complaints Received During this Reporting Period

An overview of the complaints management and investigation process is outlined below:



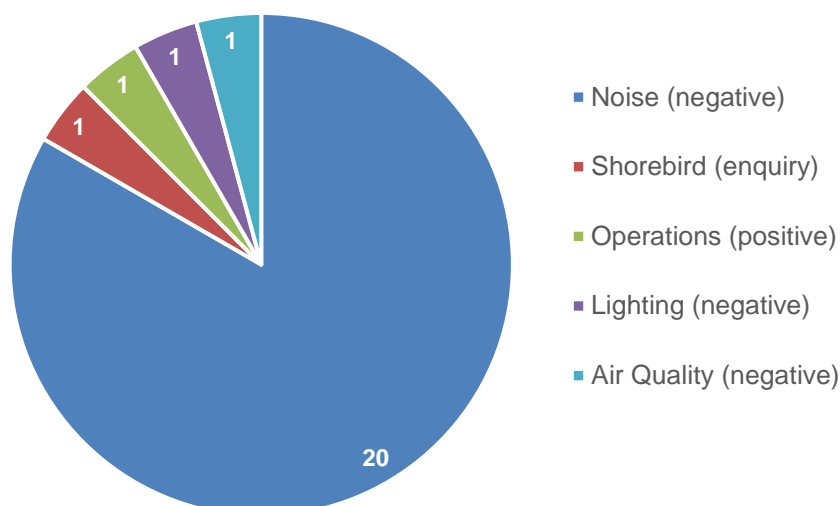
6 Commentary on Community Feedback received during this reporting period

SICTL did not receive any reportable community feedback relating to the Development Consent or SICTL operations during this reporting period.

7 Trend Analysis

Given the infrequent feedback encountered by SICTL and the variety of issues, meaningful trends over time cannot be derived from the current collected information. The below chart depicts the type and number of Community Feedback received since the commencement of operations in November 2013.

**Operational Community Feedback
Nov 2013 to March 2024**



Further graphs and trend analysis will be developed and displayed in this section once enough meaningful operational data becomes available as mentioned in the SICTL OEMP.

8 How the Community can Contact Us

- in Person at either the SICTL terminal building, Gate 150-160 Foreshore Rd Botany NSW 2019;
- by mail, sent to Sydney International Container Terminals Pty Ltd PO Box 734 Botany NSW 1455;
- by phone on 02 9578 8500 or the toll free community complaints line 1800 472 888;
- by email, on the HPA website <http://www.hutchisonports.com.au> under the 'Contact Us' page.

9 Copy of Complaints Register (with personal details redacted)
SYDNEY INTERNATIONAL CONTAINER TERMINALS LIMITED - COMMUNITY COMPLAINTS & ENQUIRIES REGISTER

| Date & time of notification | Source | Direct or indirect complaint | Method | Nature of complaint | Details of enquiry or complaint | Action taken by SICTL & follow up | SICTL Comments |
|-----------------------------|--------|------------------------------|--------|---------------------|---------------------------------|-----------------------------------|----------------|
| - | - | - | - | - | - | - | - |